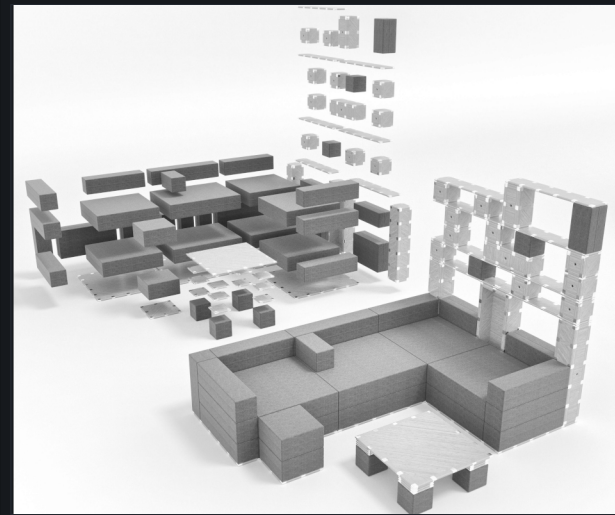


OPEN MODULAR ARCHITECTURE

## One Rule. Infinite Configurations.

SMUPI is built on a single universal rule: a 22 cm pitch on all three spatial axes. Any module produced anywhere in the world connects to any other — instantly and universally. Five cold-stamped stainless steel components make it possible.

- 22 cm pitch — standard on all 3 spatial axes
- Universal physical compatibility worldwide
- Cold-stamped stainless steel — beauty + durability
- Tool-free and fully reversible connections



**5** **Stainless Steel Components**  
Cold-stamped · durable · aesthetic

**4** **Connection Types**  
Magnetic · Mechanical · Elastic · Structural

**40+** **Countries Protected**  
EUIPO · WIPO · India · OAPI

### THE FIVE FIXING COMPONENTS

Cold-stamped stainless steel — visible · aesthetic · durable

<p><b>CORNER</b> Flat panel corners</p>	<p><b>BORDER</b> Panel side edges</p>	<p><b>VERTEX</b> Box vertices 3 axes</p>	<p><b>EDGE</b> Box edges</p>	<p><b>SURFACE</b> Panel &amp; box faces</p>

### RIGID MODULE FAMILIES

### SOFT MODULE

<p><b>BOARD — Flat Panel</b></p> <p>22×22, 22×44, 44×44 cm and multiples. Corner + Border components. Full panel or lightweight hollow-core frame construction. Fixed with barrel screws on Corner, Border and Surface.</p>	<p><b>BOX — 3D Module</b></p> <p>From 22×22×22 cm and multiples. Vertex + Edge as structural frame joints. Hollow-core option reduces weight significantly. Machine screws + threaded brackets.</p>	<p><b>PILLOW — Foam Module</b></p> <p>22×22×22 cm latex foam cube. Rubber thimbles for magnetic connectivity with any SMUPI rigid module. 45 holes per axis allow stiffness adjustment.</p>
---	---	---

### MAIN APPLICATIONS

<p><b>SHELVING &amp; BOOKCASES</b></p> <p>Boards + Boxes any layout</p>	<p><b>KITCHEN SYSTEMS</b></p> <p>Full kitchen from components</p>	<p><b>MODULAR SEATING</b></p> <p>Boxes + Pillows — sofa,</p>	<p><b>INTEGRATED APPLIANCES</b></p> <p>Devices attach to surfaces</p>	<p><b>MODULAR LUGGAGE</b></p> <p>Trolleys + bags interconnect</p>	<p><b>EMERGENCY SHELTERS</b></p> <p>Tool-free — ship flat</p>
---	---	--	---	---	---

# The Four Connection Types

USABLE INDIVIDUALLY OR IN SIMULTANEOUS COMBINATION ON THE SAME COMPONENT

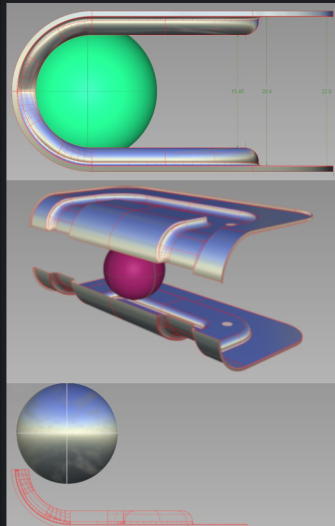
SMUPI

SMUPI components connect modules through three distinct mechanisms — each solving a different structural and aesthetic need. All are tool-free or require only a bradawl, all fully reversible, and all four can operate simultaneously on the same component set.

## MAGNETIC

Mobile magnetic spheres inside grooves — poles self-align automatically

- Self-aligning poles — always connects
- One-touch connect & easy release
- Single axis: acts as magnetic hinge
- Non-magnetic steel does not interfere
- No tools required



## RIGID MECHANICAL

Two-coil stainless steel clips in perpendicular grooves

- 2 perpendicular clips — 3-axis fix
- Inserted completely tool-free
- Removed with bradawl or screwdriver
- Secure and load-bearing
- Fully reversible without damage



## ELASTIC-FRICTIONAL

Pre-formed rubber inserts in the grooves between components

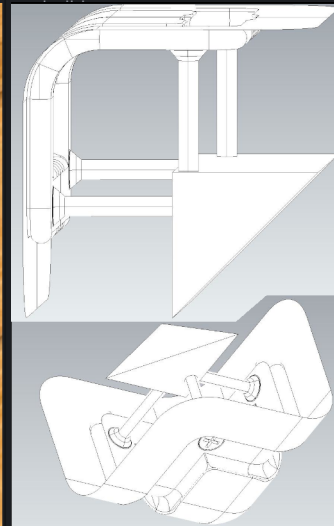
- Held by elastic friction & compression
- Fills grooves — covers screw heads
- Engineerable: feet, handles, gaskets
- Acoustic damper potential
- No tools — fully reversible



## STRUCTURAL

Components as constructive joints for hollow-core frame panels

- Holds panels & sub-modules together
- Full load-bearing structural function
- Machine screws + threaded brackets
- Corner/Border for Boards; Vertex/Edge for Boxes
- Reduces weight vs. solid panel



### KEY INSIGHT

The stainless steel 2-coil spring clip is the mechanical heart of the rigid connection. Two clips in perpendicular grooves secure a stable 3-axis fix — no tools, no glue. The same groove accepts rubber insert and magnetic sphere simultaneously: all three connection types can work at the same time on the same component set.



Multiple connection configurations on 3 axes — photo: smupi.it

### IP PROTECTION — 40+ COUNTRIES

- EUIPO** European Union — 27 member states. Metal components + Pillow Module.
- WIPO** USA, Canada, Brazil, China, Vietnam, Japan, Russia\*, South Korea\*
- India** Patent Office local registration — both IP streams covered.
- OAPI** 17 French-speaking African states — both IP streams covered.

\*Russia & South Korea: certificate under legal dispute. All other countries: issued or in final stage. Coverage spans manufacturing hubs (China, Vietnam, India), consumer markets (USA, EU, Japan) and priority emerging markets (OAPI Africa, Brazil).

### FOLLOW THIS LINKS FOR ADDITIONAL INFORMATION



### Contact Information

SMUPI.IT

Jacopo Tolja  
Email:jacopo@jacopo.com  
Mobile:+393209127778



STAINLESS STEEL 2-COIL SPRING CLIP



<https://smupi.it/clip-connection-animation/>

CLIP INSERTED ON VERTEX COMPONENT